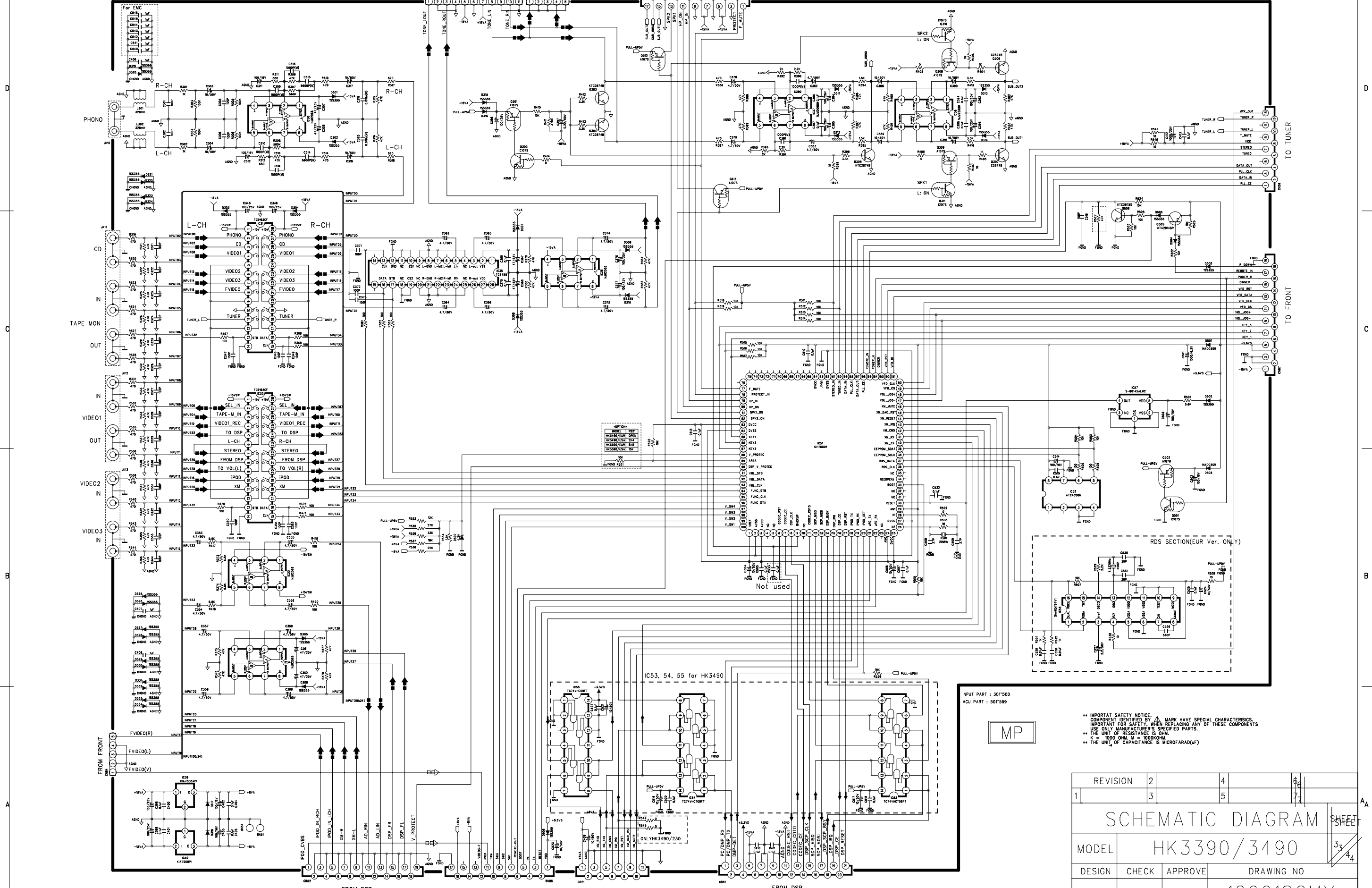




HK3490

harman/kardon



INPUT PART : 301500  
MCU PART : 501599

MP

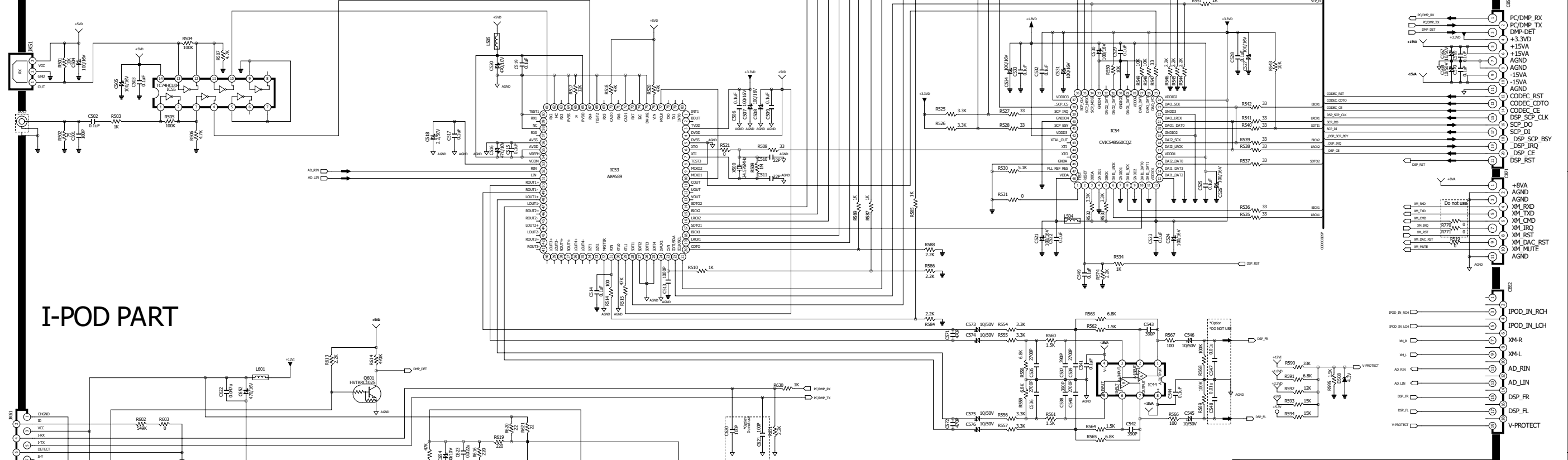
\*\*\* IMPORTANT SAFETY NOTICE. COMPONENT IDENTIFIED BY ▲ MARK HAVE SPECIAL CHARACTERISTICS. IMPORTANT FOR SAFETY, WHEN REPLACING ANY OF THESE COMPONENTS, USE ONLY MANUFACTURER'S SPECIFIED PARTS. \*\*\*  
 ▲ THE UNIT OF RESISTANCE IS OHM.  
 ▲ = 1000 OHM. ▲ = 1000000.  
 ▲ THE UNIT OF CAPACITANCE IS MICROFARAD(μF)

REVISION	2	4	6
1	3	5	7

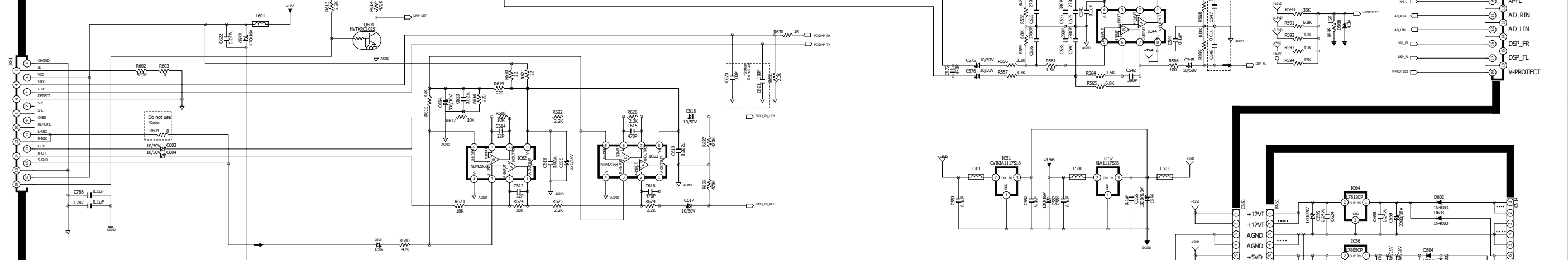
SCHEMATIC DIAGRAM SHEET

MODEL	HK3390/3490			33/44
DESIGN	CHECK	APPROVE	DRAWING NO	
Lee, K.M.	Lee, K.M.	Kim, J.H.	12061SCMY	
08/02/27	08/02/27	08/02/27	(INPUT)	

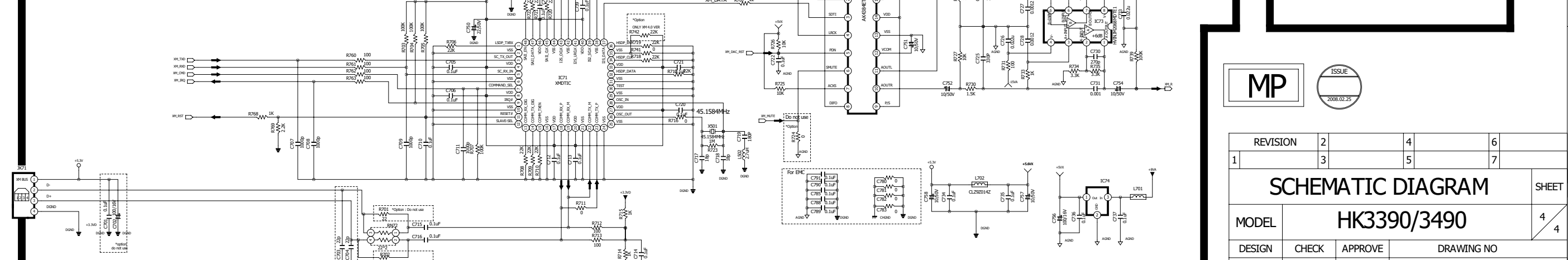
### DSP PART



### I-POD PART



### XM READY PART



MP		ISSUE	
		2008.02.25	
REVISION			
2	4	6	
1	3	5	7
SCHEMATIC DIAGRAM			SHEET
MODEL			4
HK3390/3490			4
DESIGN	CHECK	APPROVE	DRAWING NO
Lee.H.W	Lee.K.M	Kim.J.H	12062SCMY
08.02.25	08.02.25	08.02.25	(DSP)

6

5

4

3

2

1

D

D

C

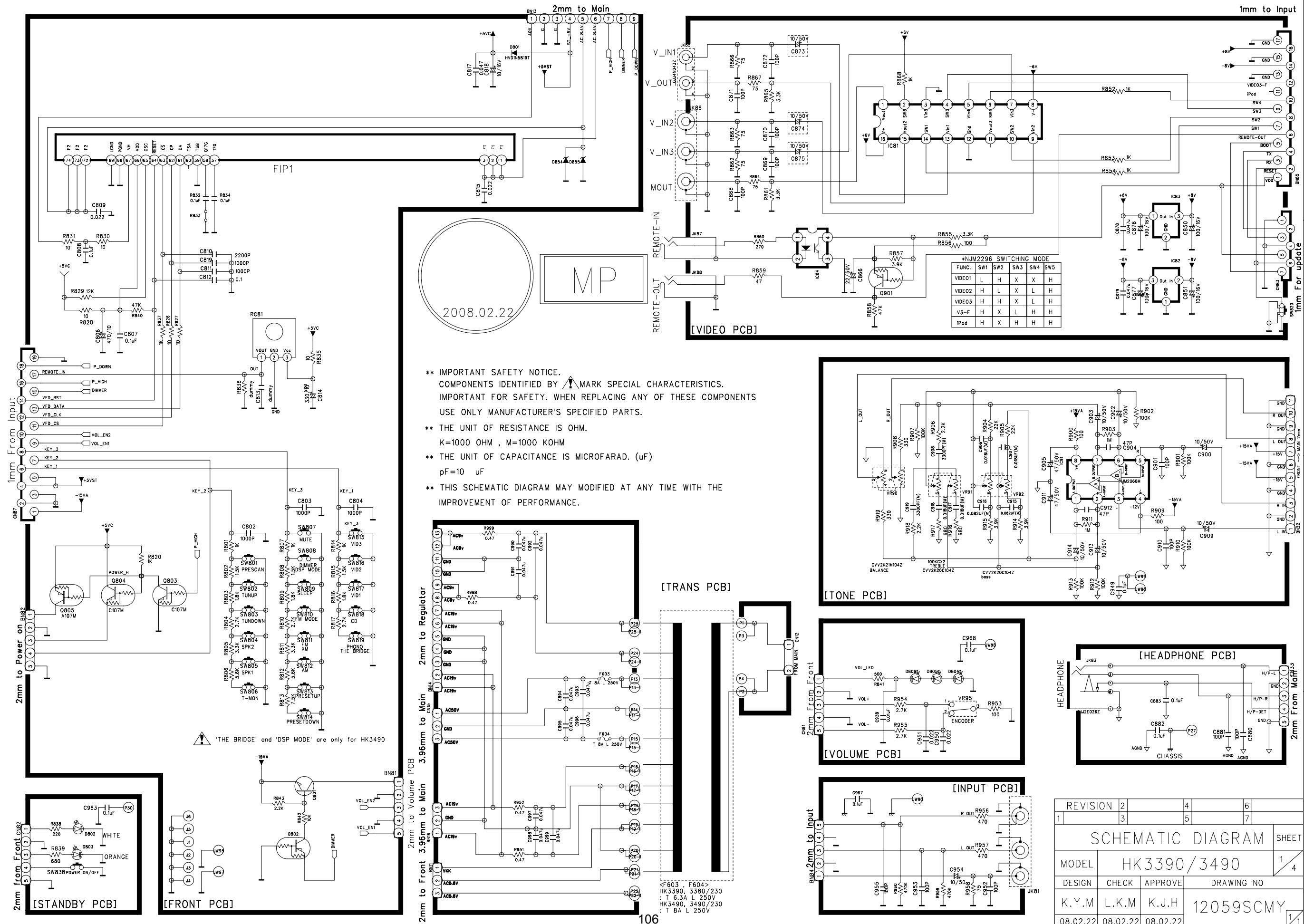
C

B

B

A

A



**\*\* IMPORTANT SAFETY NOTICE.**  
 COMPONENTS IDENTIFIED BY MARK SPECIAL CHARACTERISTICS.  
 IMPORTANT FOR SAFETY. WHEN REPLACING ANY OF THESE COMPONENTS  
 USE ONLY MANUFACTURER'S SPECIFIED PARTS.

**\*\* THE UNIT OF RESISTANCE IS OHM.**  
 K=1000 OHM , M=1000 KOHM

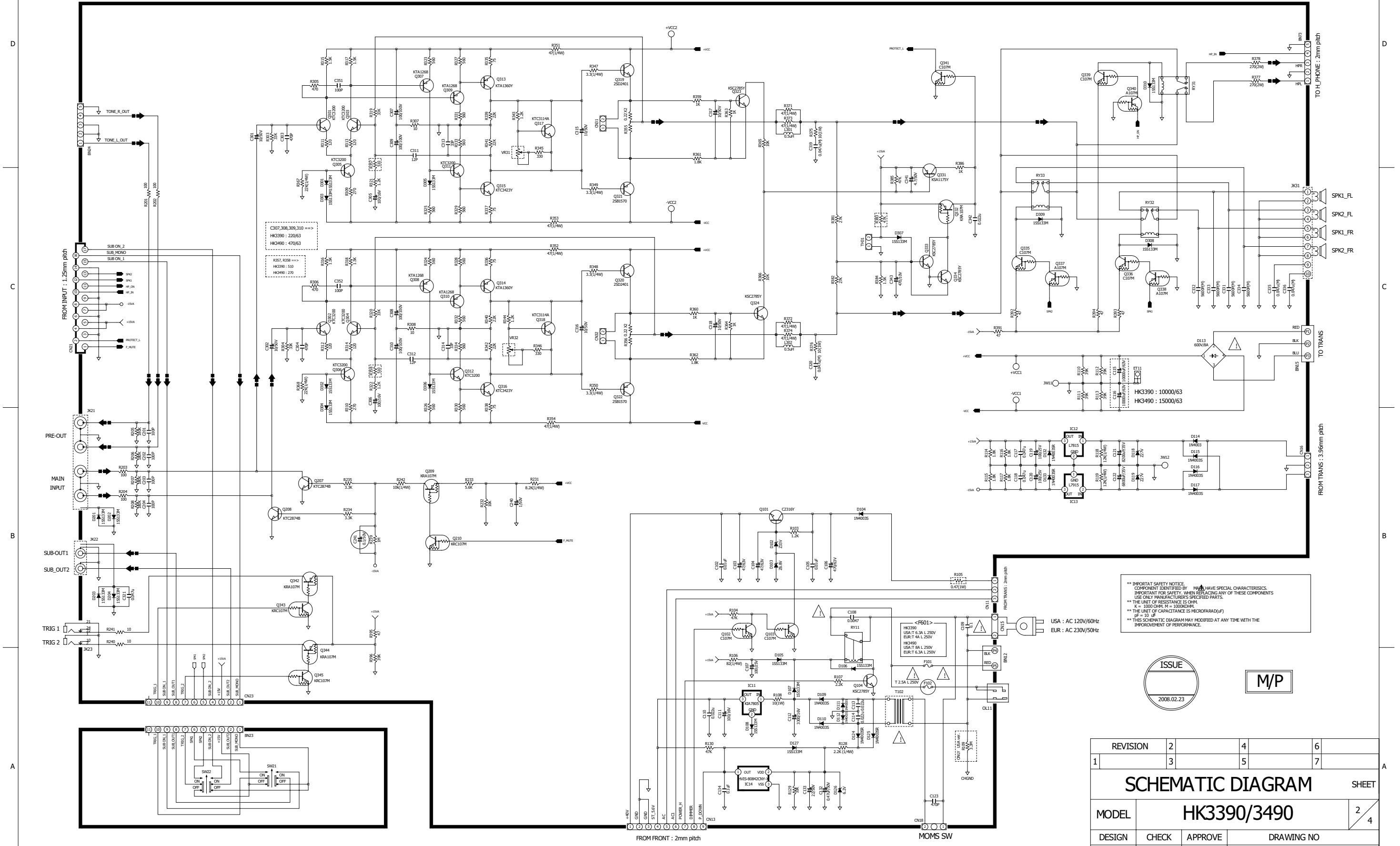
**\*\* THE UNIT OF CAPACITANCE IS MICROFARAD. (uF)**  
 pF=10 uF

**\*\* THIS SCHEMATIC DIAGRAM MAY MODIFIED AT ANY TIME WITH THE  
 IMPROVEMENT OF PERFORMANCE.**

\*NJM2296 SWITCHING MODE

FUNC.	SW1	SW2	SW3	SW4	SW5
VIDEO1	L	H	X	X	H
VIDEO2	H	L	X	L	H
VIDEO3	H	H	X	L	H
V3-F	H	X	L	H	H
IPod	H	X	H	H	H

REVISION	2	4	6
	3	5	7
SCHEMATIC DIAGRAM SHEET			
MODEL	HK3390/3490		
DESIGN	CHECK	APPROVE	DRAWING NO
K.Y.M	L.K.M	K.J.H	12059SCMY
08.02.22	08.02.22	08.02.22	



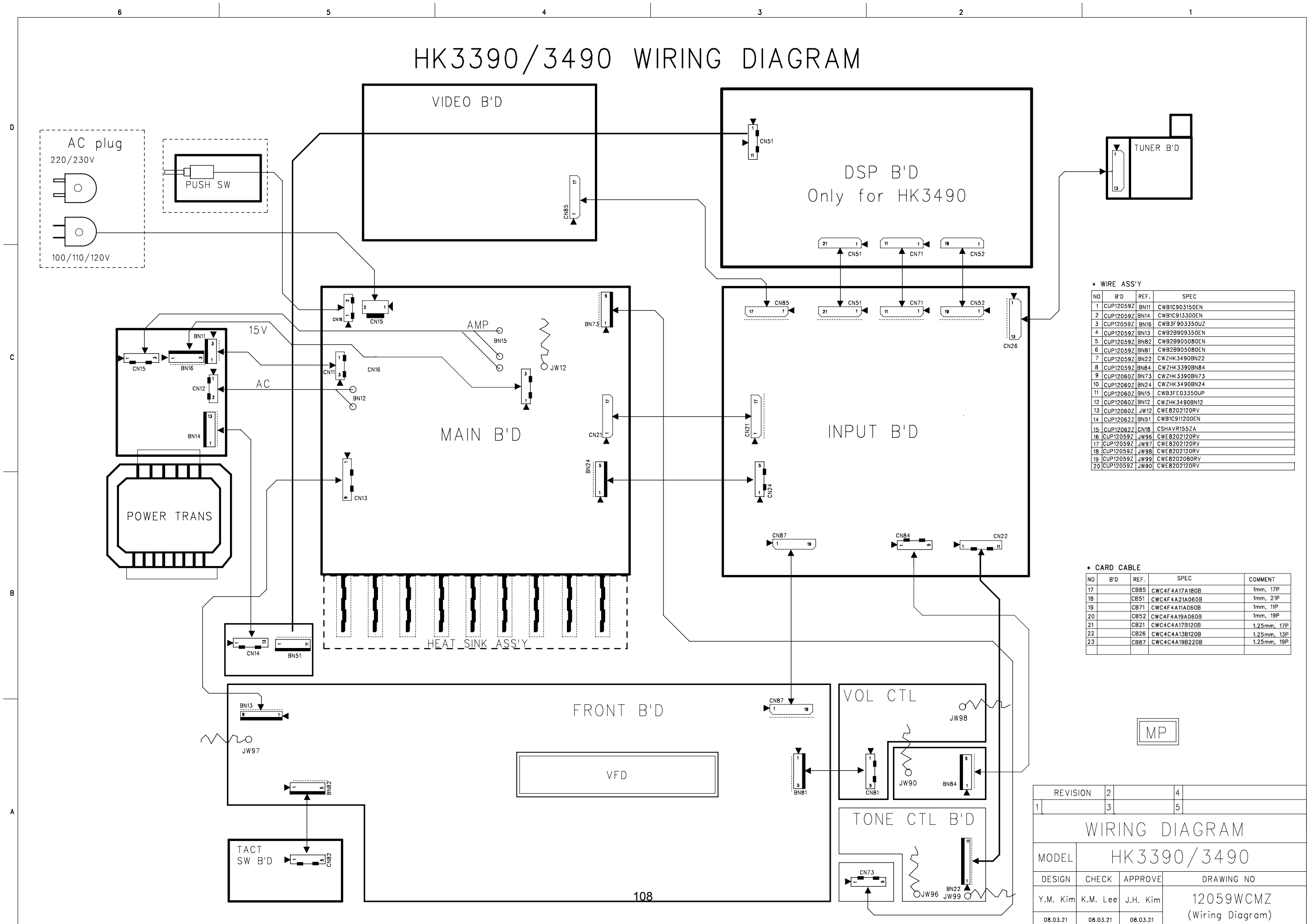
**\*\* IMPORTANT SAFETY NOTICE.**  
 COMPONENT IDENTIFIED BY HAVE SPECIAL CHARACTERISTICS.  
 IMPORTANT FOR SAFETY, WHEN REPLACING ANY OF THESE COMPONENTS,  
 USE ONLY MANUFACTURER'S SPECIFIED PARTS.  
 \*\* THE LIMIT OF CAPACITANCE IS MICROFARAD(UF)  
 K = 1000 OHM, M = 100000 OHM  
 PF = 10 UF  
 \*\* THIS SCHEMATIC DIAGRAM MAY BE MODIFIED AT ANY TIME WITH THE  
 IMPROVEMENT OF PERFORMANCE.

ISSUE  
 2008.02.23

M/P

REVISION	2	4	6
1	3	5	7
SCHEMATIC DIAGRAM			SHEET
MODEL	HK3390/3490		2/4
DESIGN	CHECK	APPROVE	DRAWING NO
Choi.D.C	Lee.K.M	Kim.J.H	12060SCMY
08.02.23	08.02.23	08.02.23	(MAIN)

# HK3390/3490 WIRING DIAGRAM



\* WIRE ASS'Y

NO	B'D	REF.	SPEC
1	CUP12059Z	BN11	CWB1C903150EN
2	CUP12059Z	BN14	CWB1C913300EN
3	CUP12059Z	BN16	CWB3F903350UZ
4	CUP12059Z	BN13	CWB2B909350EN
5	CUP12059Z	BN82	CWB2B905080EN
6	CUP12059Z	BN81	CWB2B905080EN
7	CUP12059Z	BN22	CWZHK3490BN22
8	CUP12059Z	BN84	CWZHK3390BN84
9	CUP12060Z	BN73	CWZHK3390BN73
10	CUP12060Z	BN24	CWZHK3490BN24
11	CUP12060Z	BN15	CWB3FE03350UP
12	CUP12060Z	BN12	CWZHK3490BN12
13	CUP12060Z	JW12	CWE8202120RV
14	CUP12062Z	BN51	CWB1C911200EN
15	CUP12062Z	CN18	CSHAVR155ZA
16	CUP12059Z	JW96	CWE8202120RV
17	CUP12059Z	JW97	CWE8202120RV
18	CUP12059Z	JW98	CWE8202120RV
19	CUP12059Z	JW99	CWE8202080RV
20	CUP12059Z	JW90	CWE8202120RV

\* CARD CABLE

NO	B'D	REF.	SPEC	COMMENT
17		CB85	CWC4F4A17A180B	1mm, 17P
18		CB51	CWC4F4A21A060B	1mm, 21P
19		CB71	CWC4F4A11A060B	1mm, 11P
20		CB52	CWC4F4A19A060B	1mm, 19P
21		CB21	CWC4C4A17B120B	1.25mm, 17P
22		CB26	CWC4C4A13B120B	1.25mm, 13P
23		CB87	CWC4C4A19B220B	1.25mm, 19P

REVISION	2	4
1	3	5
WIRING DIAGRAM		
MODEL	HK3390/3490	
DESIGN	CHECK	APPROVE
Y.M. Kim	K.M. Lee	J.H. Kim
08.03.21	08.03.21	08.03.21
DRAWING NO		12059WCMZ
		(Wiring Diagram)